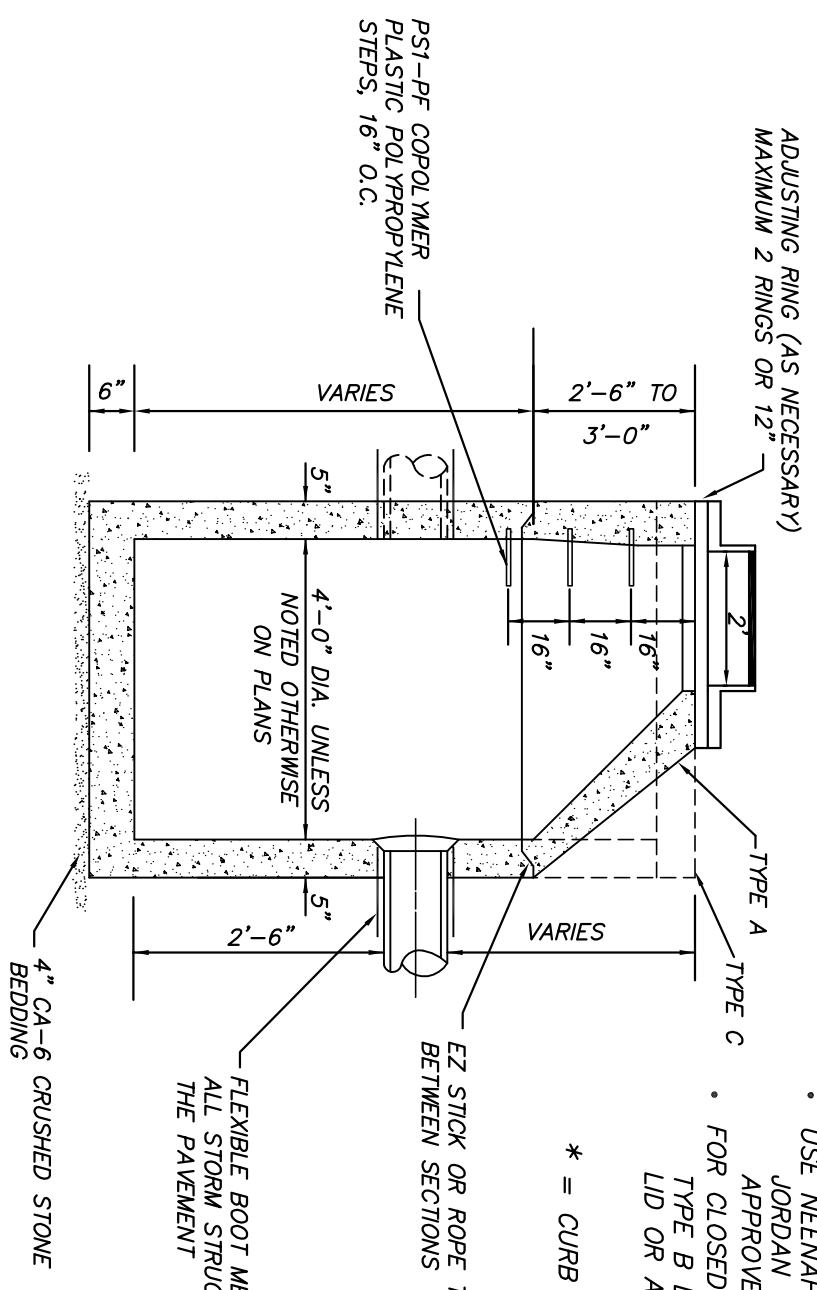


FRAME AND GRATE TYPES

- FOR B6.12 CURB: EAST JORDAN 7221 WITH TYPE M1 GRATE & T1 BACK, NEENAH R-3010 WITH TYPE A GRATE & BARRED CURB BOX OR APPROVED EQUAL.*
- FOR M3.12 CURB: EAST JORDAN 7525 OR APPROVED EQUAL.*
- USE NEENAH R-2504 WITH TYPE D GRATE, EAST JORDAN 1050Z1 WITH TYPE M1 GRATE OR APPROVED EQUAL FOR STRUCTURES IN THE STREET.
- FOR CLOSED COVERS, USE NEENAH R-1713 WITH TYPE B LID, EAST JORDAN 1050Z1 WITH TYPE A LID OR APPROVED EQUAL.

* = CURB BOX MUST BE BARRED STYLE.



FLEXIBLE BOOT MEETING ASTM C 923 FOR ALL STORM STRUCTURES LOCATED WITHIN THE PAVEMENT

CATCH BASIN TYPE A & C

NOTES:

1. ONLY PRECAST STRUCTURES ALLOWED.
2. PRECAST CONCRETE BASE MUST BE INTEGRALLY CAST WITH THE LOWEST WALL SECTION.
3. THE FRAME AND GRATE SHALL BE MORTARED TO THE CONCRETE STRUCTURE.
4. ALL STRUCTURES LOCATED IN THE PAVEMENT SHALL FOLLOW THE WEEPHOLE DETAIL.

CATCH BASIN DETAIL

SCALE	NONE	NO.	REVISIONS	BY	DATE
DATE	5-25-05	1.	MISC UPDATES	SW	2/10
DRAFTER	SLW				
VILLAGE OF HOFFMAN ESTATES			FILE NAME:		
TRANSPORTATION & ENGINEERING DIVISION			CTCHBASN.DWG		
				SHEET NO.	1 OF 1